

Trends

Color Revelation

2020 UPDATE

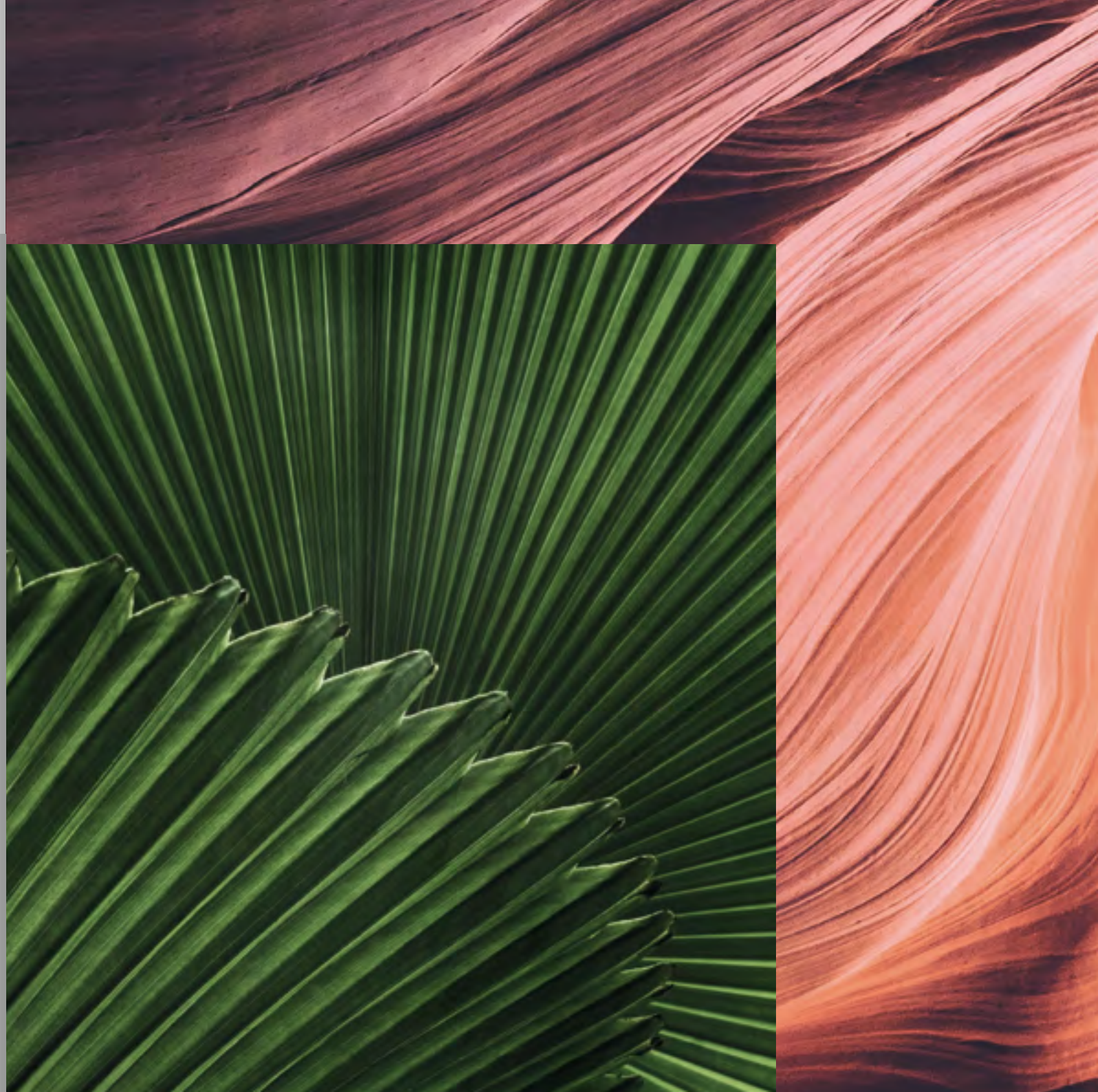
CIN

Trends 2020

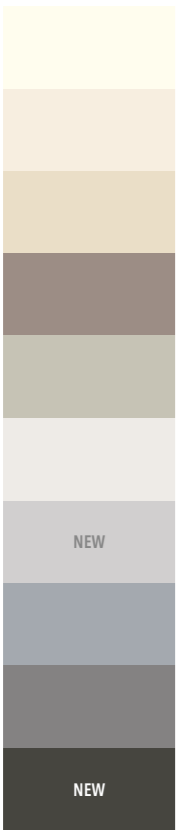
The soul of a colour
is revealed in its pure state,
an essential emotion born
of a force of nature.



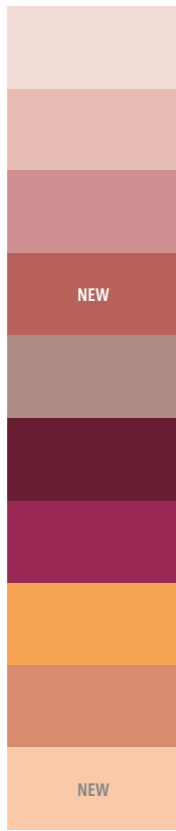
Discover more inspiration
colorrevelation.com



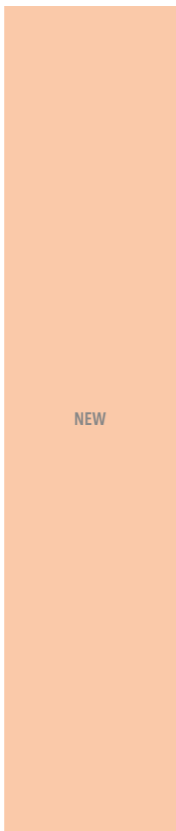
Neutral
Revelation



Red
Revelation



Color of
the season



Blue
Revelation



Green
Revelation



Color Revelation

The revelation continues. Discover the colour of the year and the 8 new tonalities amongst the collection's four chromatic ranges. Inspire yourself, combine them and express yourself without limits.



Discover more inspiration
colorrevelation.com



Trends 2020

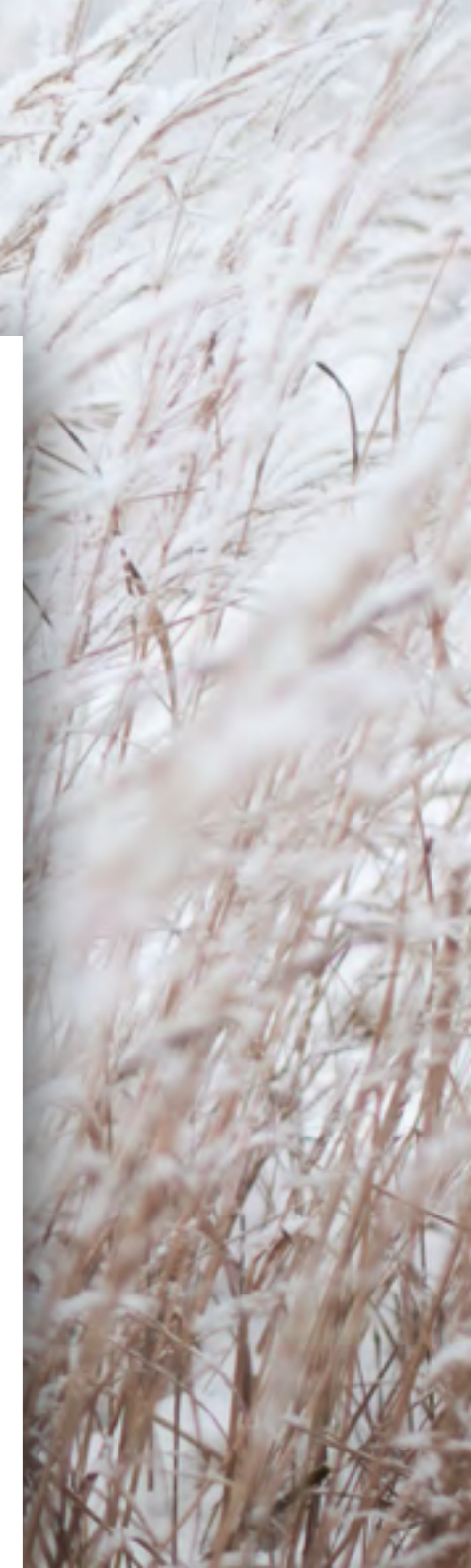
Neutral Revelation

Colours, materials and textures that convey purity in the quest for balance and serenity.

Color Revelation



Linen #E684
Savasana #E727
Greige #E683
Taupe #E679
Alpaca Grey #E680
Carrara White #E675
NEW Soft Grey #E733
Simply Grey #E676
Stromboli #E677
NEW Charcoal #E734





Neutral Revelation

○ **Linen** #E684. Linen, an age-old fabric that brings to mind decorative notes over generations... a creamy, slightly yellowish white that evokes sensations of luminosity, coolness and well-being.

● **Savasana** #E727. Breathe in deeply. Breathe out. Practice savasana, a colour that, like yoga, wraps you up in a pleasant feeling of tranquility and balance.

● **Greige** #E683. The ideal proportion for a neutral, timeless balance. A blend between grey and beige, perhaps influenced by the French word «grège» which means «raw silk».

● **Taupe** #E679. An unconditional presence in fashion and decoration, Taupe is a colour between brown and grey. The word derives from the French which means «mole».

● **Alpaca Grey** #E680. Alpaca, a wonderful wool in 22 natural colours... our favourite is the light grey that inspired this shade that will dress the home in a natural, refined fashion.

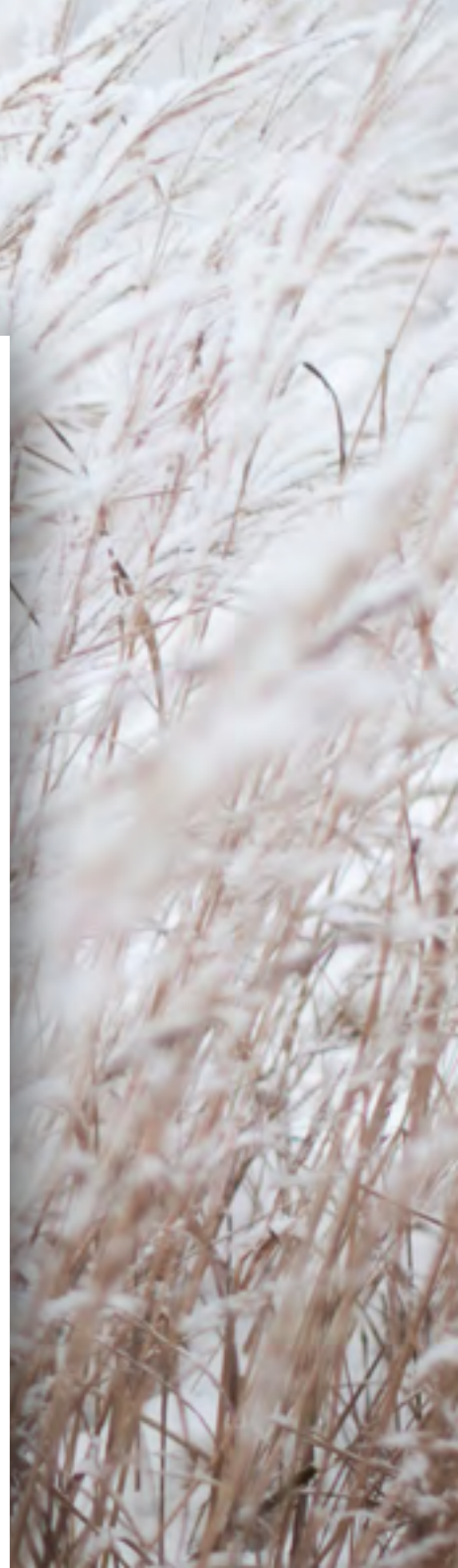
● **Carrara White** #E675. The natural elegance of the famous Carrara marble inspires this refined, slightly greyish white.

● **NEW Soft Grey** #E733. Simply minimalist. Softly silent. A delicate grey that breathes light, tenderness and well-being.

● **Simply Grey** #E676. Simply neutral... that's how it is! A medium grey, with the touch of sophistication that is ideal to balance out the decor.

● **Stromboli** #E677. It's called Stromboli and it's a warm, slightly purplish grey, inspired by the rock from the Italian volcano of the same name.

● **NEW Charcoal** #E734. Dark and dense, an elegant backdrop that highlights the decoration and submerges you in an ever-trendy ambience.



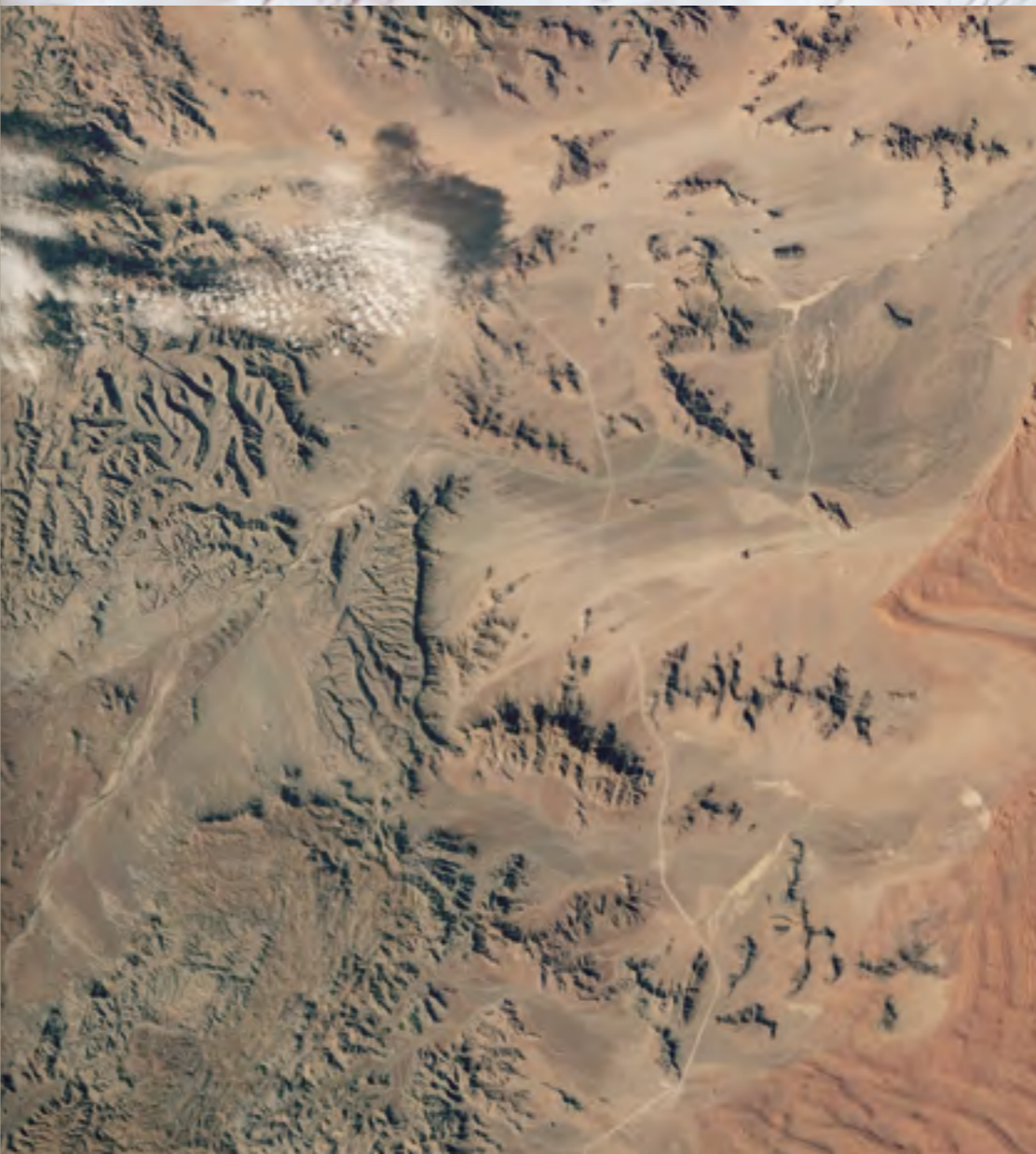


Trends 2020

Life slips by in tiny
fractions of time. There is
a fragment of eternity in
each instant.



Discover more inspiration
colorrevelation.com/neutral





Trends 2020

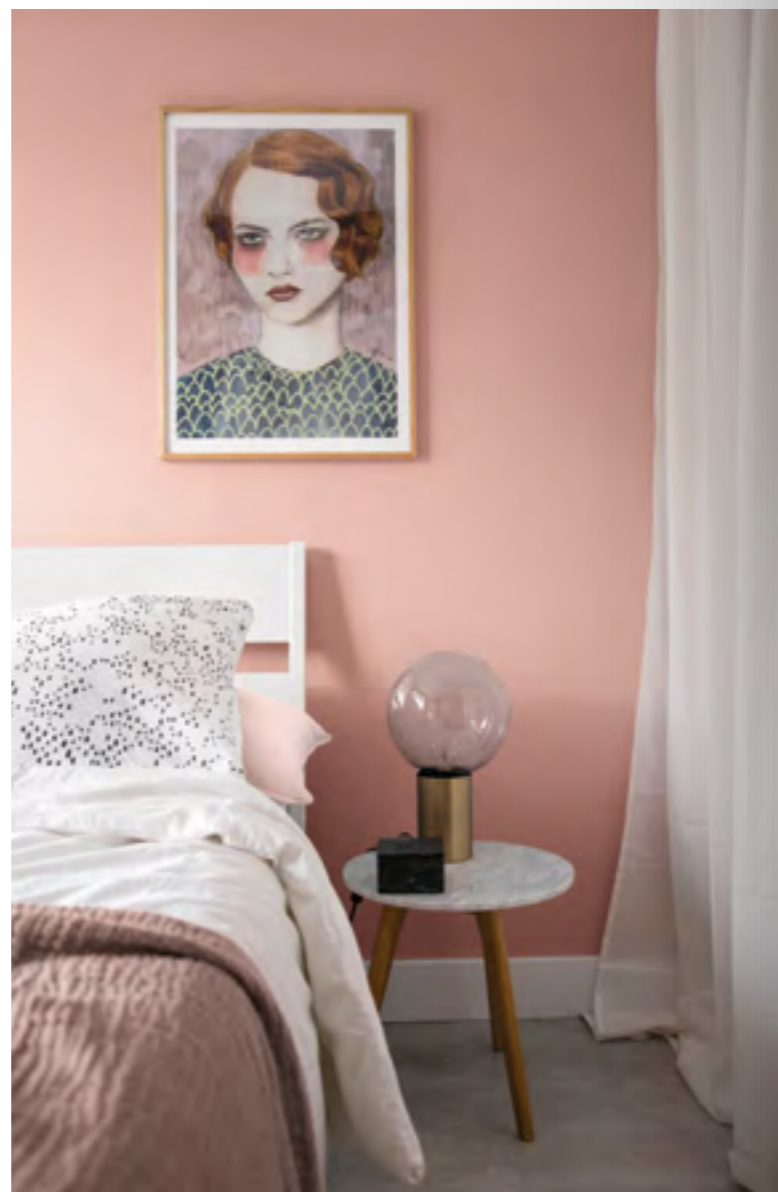
Red Revelation

A house is a place that speaks
of emotions with colours and scents that
are gentle, sensitive and pleasing.

Color Revelation



- Rose Breeze #E718
- New Blush #E690
- Cameo Pink #E685
- NEW Red Clay #E736
- Nude #E687
- Burgundy #E694
- Bouquet #E692
- Turmeric #E720
- Canyon #E719
- NEW Pink Oyster #E735





Red Revelation

- **Rose Breeze** #E718. A rose of a soft and light hue, silky and delicate like the touch of fine grains of sand falling through the fingers and borne away on a gentle breeze.
- **New Blush** #E690. A pastel, ultra-light blush, with a special pink and orangey touch. Today's trendiest colour... to be applied without hesitation in every nook and cranny of the home.
- **Cameo Pink** #E685. The cameo is back... and it's never been as topical! Chic, irresistible and feminine!
- **NEW Red Clay** #E736. The red clay reflects the mineral character of the earth, purity and craftsmanship and brings a tone of marked personality.
- **Nude** #E687. A perfect skin tone that makes you feel like touching it at first sight.
- **Burgundy** #E694. An opulent, modern shade of wine, inspired by the typical brownish dark red of the French wine of the same name.
- **Bouquet** #E692. This colour has a surprising, thrilling effect, like a bouquet of roses blooming splendidly in the heart of the home.
- **Turmeric** #E720. In the vast mosaic of the colours of India, the rich yellow of turmeric recalls the typical aromas, flavours and landscapes of the country.
- **Canyon** #E719. Embodies the soft touch and personality of limestone and sandstone sculptures, depicting emblematic scenarios of the canyons of North America.
- **NEW Pink Oyster** #E735. A sweet fusion of pink and orange. Inspired by the spontaneous shades of pink oyster mushrooms.

Trends 2020

There is a kind of beauty
that is universal and axiomatic,
something that embraces
us with a certain elusiveness
as we ponder it.



Discover more inspiration
colorrevelation.com/red

Trends 2020

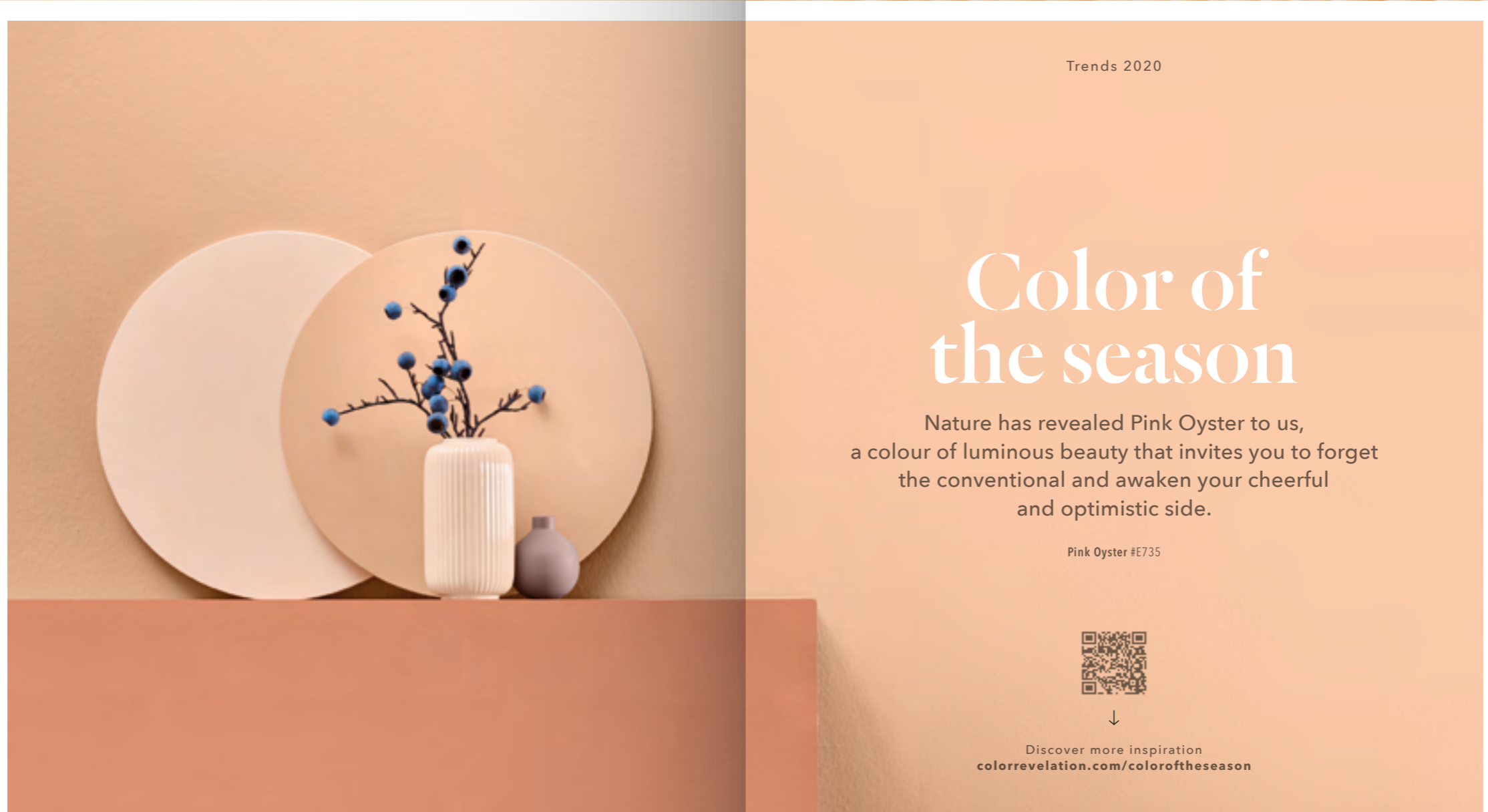
Color of the season

Nature has revealed Pink Oyster to us,
a colour of luminous beauty that invites you to forget
the conventional and awaken your cheerful
and optimistic side.

Pink Oyster #E735



Discover more inspiration
colorrevelation.com/coloroftheseason





Trends 2020

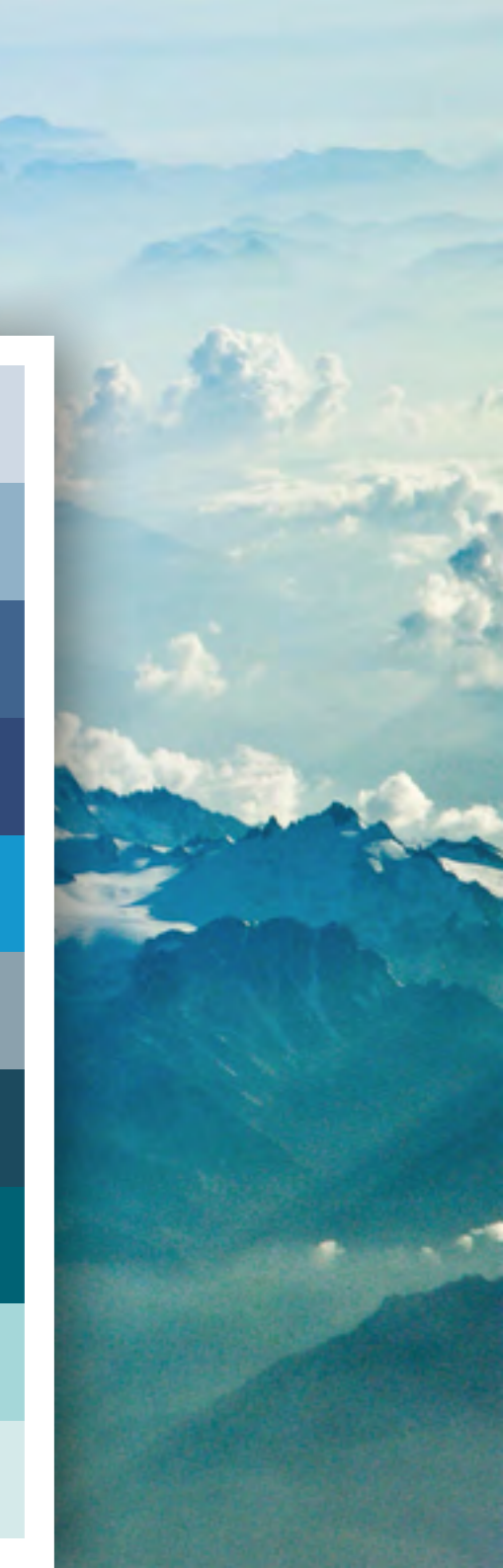
Blue Revelation

One can lend colour to calm and intensity, to stillness and movement, to rest and vitality.

Color Revelation



Glassy Blue #E721
Caelum #E730
Mare Nostrum #E697
Navy Blue #E722
Into the Blue #E696
Sea Clay #E703
Petrol Blue #E702
Bleu Canard #E701
NEW Seaside #E740
NEW Light Blue #E739



Blue Revelation

● **Glassy Blue #E721.** A soft mineral blue almost transparent. A calm and imperturbable color, able to create an atmosphere of eternity around us.

● **Caelum #E730.** The color of calm and silent passage of clouds. The perfect tone to escape and daydream.

● **Mare Nostrum #E697.** A Latin expression which, through this colour, conveys the history, colour and heritage of a sea that belongs to us all. A unique blue, the colour of the Mediterranean.

● **Navy Blue #E722.** A blue that brings us the freshness of the high seas. A classic that will never go out of fashion and always at the cutting edge of decoration.

● **Into the Blue #E696.** This is that blue of the immense sky that takes us further away, into the infinite... limitless, it's the blue of the sea, of peace and air. Breathe deeply...

● **Sea Clay #E703.** A natural colour, inspired by sea clay, thousands of years old. A greenish-grey tone that fills up space in a balanced way.

● **Petrol Blue #E702.** This is our petrol blue! Rich, deep and dark, permanently shifting between blue and green. Magically undefinable.

● **Bleu Canard #E701.** From the French for teal. A trendy, historical colour in the fashion lexicon, halfway between blue and green, originating in the typical colour of the feathers of certain ducks.

● **NEW Seaside #E740.** The slow passage of time. The calm sea. The breeze at siesta time. The blue Seaside immerses you in a perpetual summer.

● **NEW Light Blue #E739.** A vaporous blue, so discreet and delicate that it seems to fade away. It recalls the tenuous crystalline transparency of water.

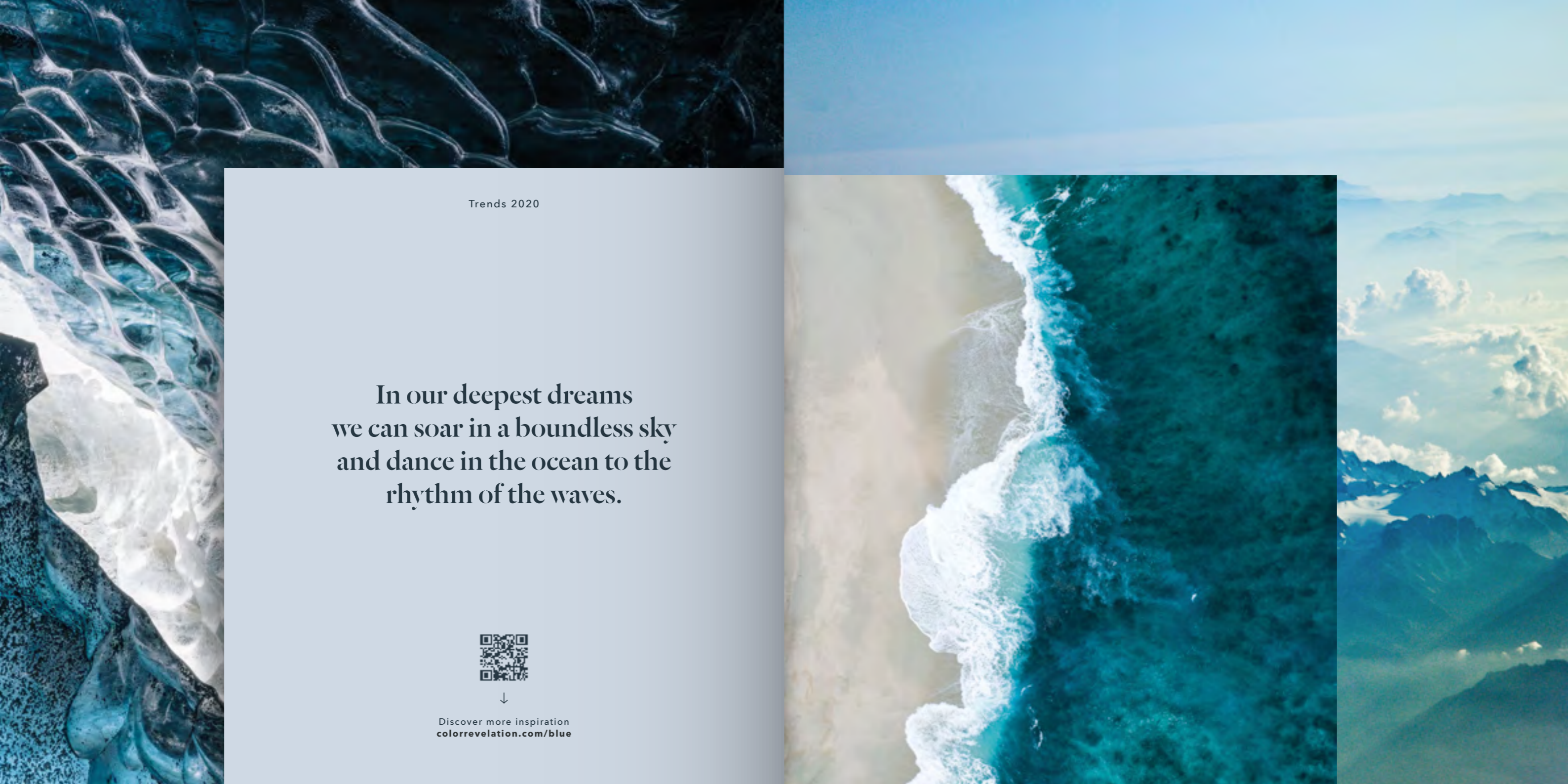


Trends 2020

In our deepest dreams
we can soar in a boundless sky
and dance in the ocean to the
rhythm of the waves.



Discover more inspiration
colorrevelation.com/blue



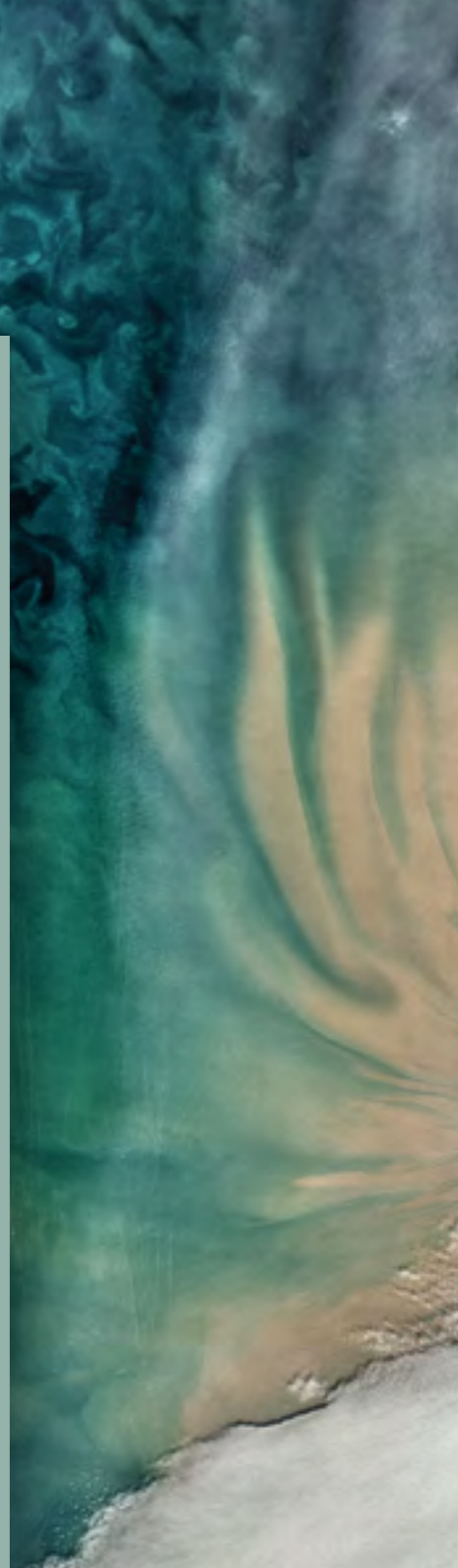


Trends 2020

Green Revelation

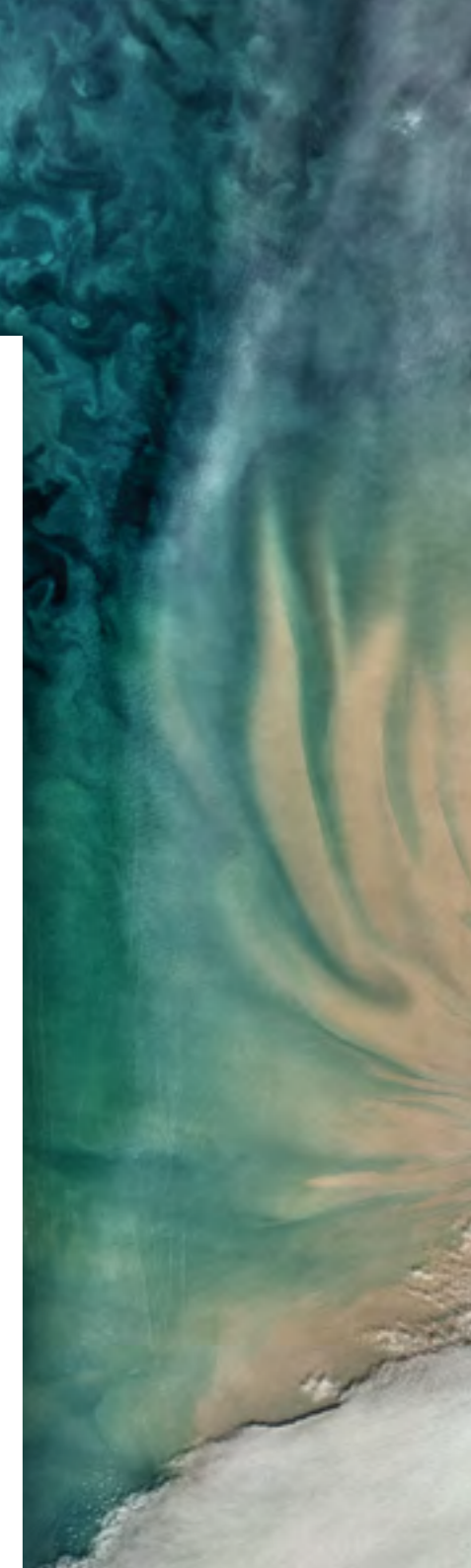
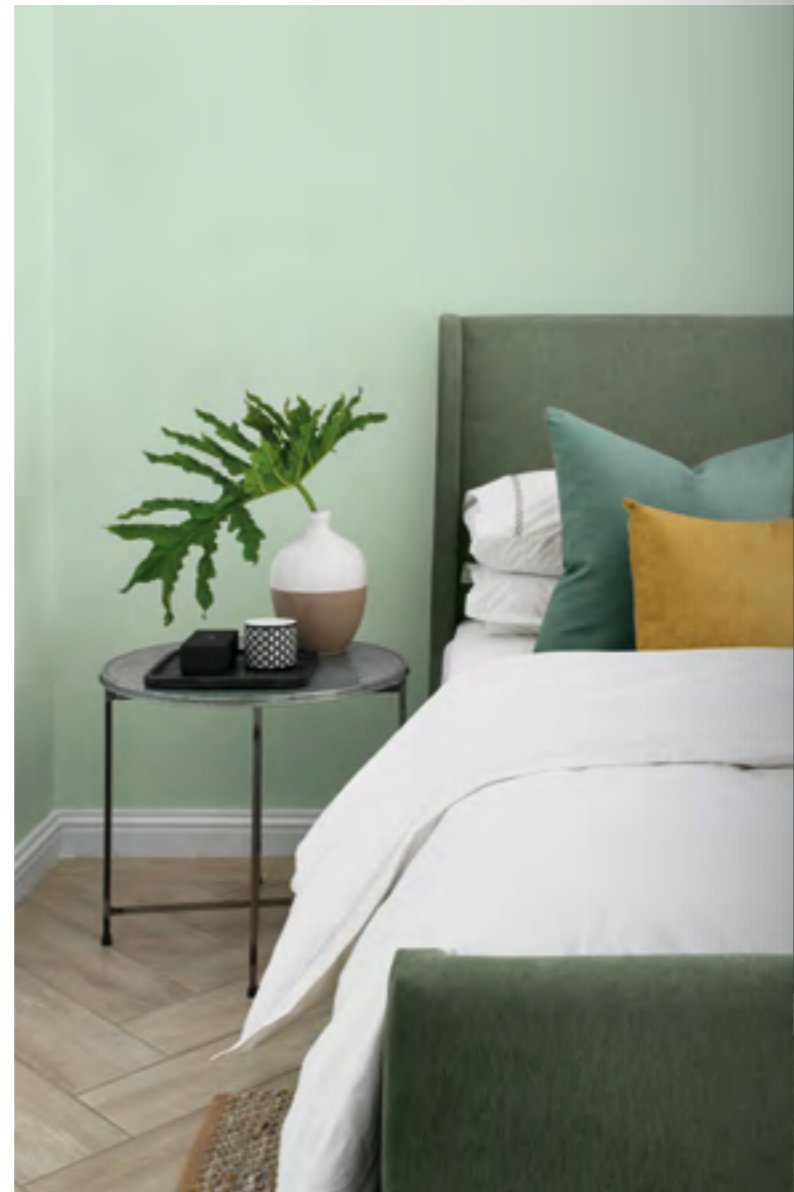
With its different shades and forces, nature fills our space with life.

Color Revelation





Succulent Green #E724
Lichen #E709
Sage Green #E725
Malachite #E726
Caribbean #E705
Khaki Vert #E711
NEW Olive #E737
Mustard #E714
Verdigris #E706
NEW Rainforest #E738





Green Revelation

● **Succulent Green #E724.** The home is nourished by the warmth and freshness of this colour, inspired by the semi-translucence of succulent plants.

● **Liquen #E709.** An organism formed by a fungus and an alga, lichen green is also the name of a colour used in decoration and fashion to mean greyish light green tones.

● **Sage Green #E725.** This natural green is associated with health and vitality, just like sage leaves. Elegant and timeless, an ideal tone for balance and harmony.

● **Malachite #E726.** Green and proud. Intense but optimistic. A colour that speaks of minerals like malachite, which is widely used in decoration.

● **Caribbean #E705.** A cool, aquatic and tropical-like medium green that evokes the Caribbean Sea and its idyllic scenery... Embark on this journey.

● **Khaki Vert #E711.** The word derives from the Persian «khak» which means dust or the colour of earth. Used by armies as camouflage, this greenish khaki is today a must-have colour in fashion.

● **NEW Olive #E737.** The natural appearance of olive green evokes an organic and serene lifestyle, where simplicity and comfort prevail.

● **Mustard #E714.** A colour used mainly in fashion and decoration. A shady yellow which, applied in the right proportion, turns out to be a daring, elegant solution for the decor.

● **Verdigris #E706.** The name given to the historic bluish-green pigment resulting from the oxidation of copper. Today, this shade combines with current trends to reveal an elegant and sophisticated colour.

● **NEW Rainforest #E738.** A homage to nature and ecology. A celebration of life. Rainforest clothes you in the colour of the immensity of a forest.

Trends 2020

With its innate, exuberant
vigour, the natural devours the
fake to reclaim what is original
and authentic.



Discover more inspiration
colorrevelation.com/green

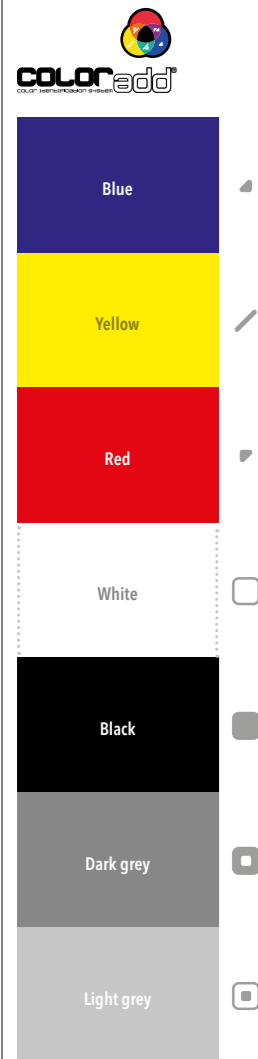


Colour is for everyone

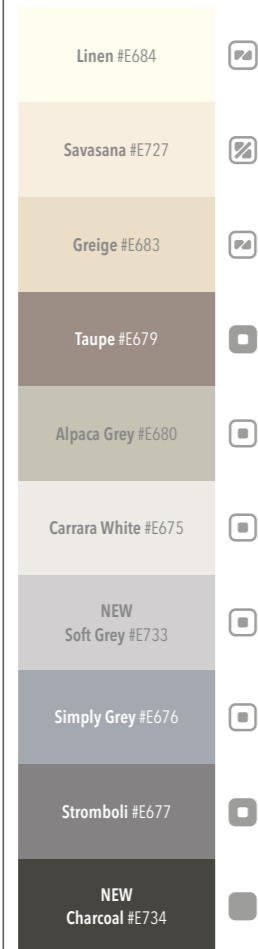
Always at the forefront of colour and innovation, CIN has adopted the universal colour code for the colour blind, Color ADD®. This is a monochrome graphic code that enables the colour blind to identify colours

in a quick and simple way through a process of logical association that is easy to memorise. The code starts using primary colours (blue, red and yellow), represented by symbols, which are then composed into secondary colours.

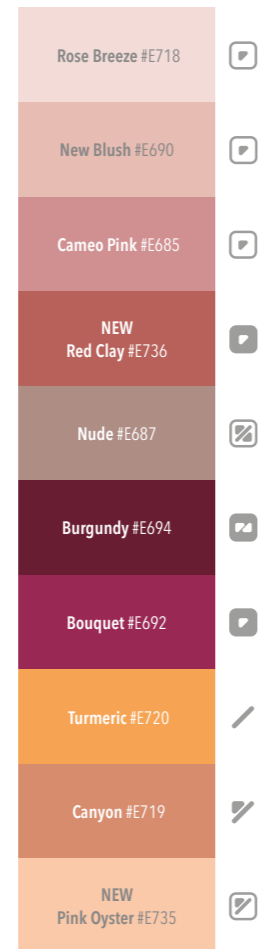
Two more shapes are added to the primary colour symbols to represent white and black. When combined with other colours, these will turn them either lighter or darker.



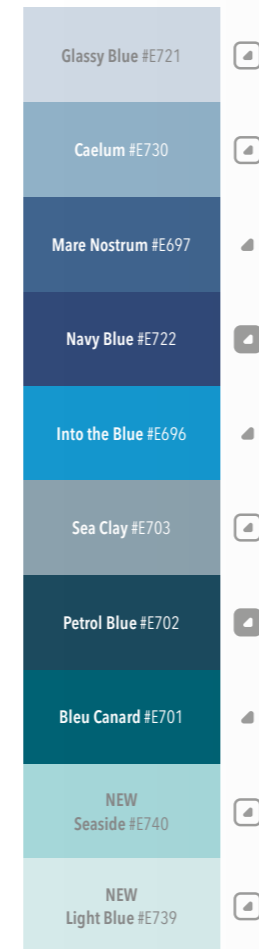
Neutral Revelation



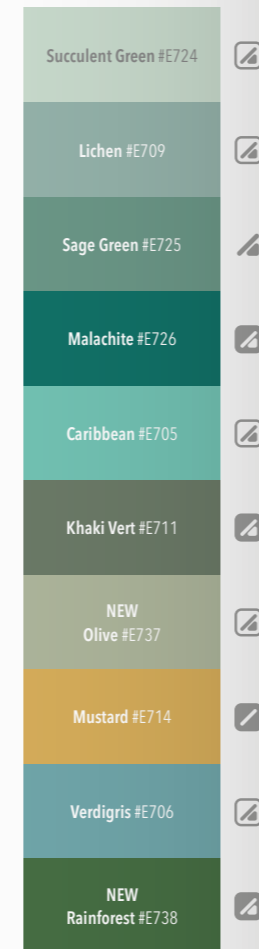
Red Revelation



Blue Revelation



Green Revelation



Paint before you paint. Choose, step by step.

discover

Set out to discover the colours most used this year. If your range of choices is open, please view the CIN Colour Catalogues and choose the right colour for your wall.

create

If you happen to come across a colour you like, bring us a sample: paper, fabric, ceramic, wood or any other material will do. Then, head off to a CIN store and see how we can create the exact same colour from your sample.

combine

CIN stores can provide you with a series of small colour cards free of charge, which you can take home and combine with the other colours already decorating your home.

test

Before you paint, try out the colour on your wall by taking home with you a small tin of colour (TESTiT). Pick a discreet place in which to test, let the paint dry and wait to find out if the colour makes the final cut.

photograph

Another way to turn a colour you like into a CIN paint is to photograph it. Download the COLORiT app. Using this app you will immediately identify the CIN reference that matches the colour you have photographed, and you can take the paint home with you.

ChromaGuide

To find out more CIN colours, we recommend you to explore our ChromaGuide fan deck. There you will find 1650 new and unique colours, specially formulated for interior walls. Please visit our website: www.chromaguide.com

Discover our website

Discover our products and the latest news on the brand at deco.cin.com

Facebook

Share your colour experiences with us and keep up to date with the brand's most recent activities at www.facebook.com/CINcoatings

CIN products

The colours shown here can be tinted using the CIN Colormix 3G system, in the following products:

For walls and ceilings:

- VinylMatt.
- VinylClean.
- VinylSoft.
- VinylSilk.
- Cinacryl (matt, satin and glossy).
- Cináqua.
- VinylMatt TESTiT.

For woods and metals:

- Sintecin (matt, satin and glossy).
- AC-Thane (acetinado).
- Cinacryl (matt, satin and glossy).

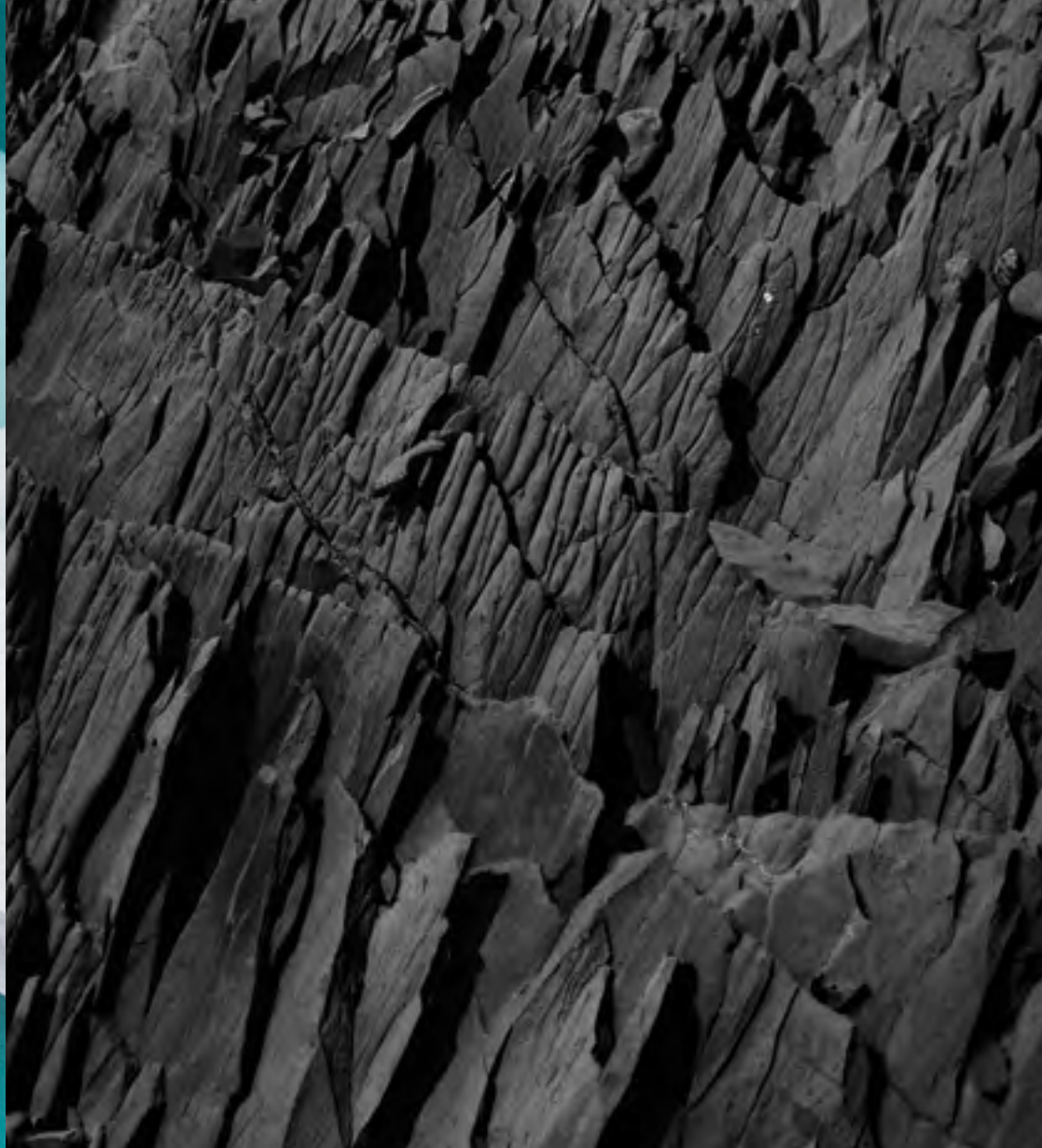
Personalised assistance

For a more personalized assistance please visit a CIN store or contact our Customer Service at customer-service@cin.com

Our Brand

Genuine Portuguese company since 1917, CIN is a reference in the coating market. CIN's innovative colours stem from years of research that have led to products of the highest quality with the best performance and unique solutions for indoors and outdoors.

Selecting the colour is one of the most important moments when decorating a space. CIN is aware of this, and has made every effort to ensure faithful reproduction of the colours in this catalogue. However, due to the limitations of printing techniques, the colours may show differences from the original. We recommend, therefore, making a colour test on the surface to be painted before any final application using TESTiT. The test enable customers to make an informed choice and CIN is not responsible for the consequences of their choice or its application.



www.colorrevelation.com

Follow us on facebook



CIN

CIN - Corporação Industrial do Norte, S. A.

Av. de Dom Mendo nº 831 (antes EN13 km6) - 4474-009 Maia - Portugal
T +351 229 405 000 - customerservice@cin.com
www.cin.com

CIN Valentine, S.A.U.

P. I. Can Milans - Riera Seca, 1 - 08110 Montcada i Reixac - España
T +34 93 565 66 00 - customerservice.es@cin.com

Pinturas CIN Canarias, S.A.U.

P. I. Güimar, Manzana 13, Parcela 2 - 38509 Güimar - Tenerife
España | T +34 922 505 330 - customerservice.es@cin.com

CIN Celliose, S.A. - Division CIN Déco

Chemin de la Verrerie - BP 58 - 69492 Pierre Bénite Cedex - France
T +33 (0) 4 72 39 77 35 - customerservice.fr@cin.com

CIN Coatings Polska Sp. z o.o.

Ul. Ryżowa 53 - 02-495 Warszawa - Polska
T +48 22 8681068 - T +48 518 194 418 - cinwarszawa@farby-cin.pl

Tintas CIN Angola, S.A.

R. Pedro Álvares Cabral, nº 21 - Cx Postal 788 - Benguela - Angola
T +244 222 397 527 - tcin@cinangola.co.ao

Tintas CIN de Moçambique, S.A.

Av. das Indústrias, 2507 - Machava - Moçambique
T +258 21 748 012 - geral@cin.co.mz